



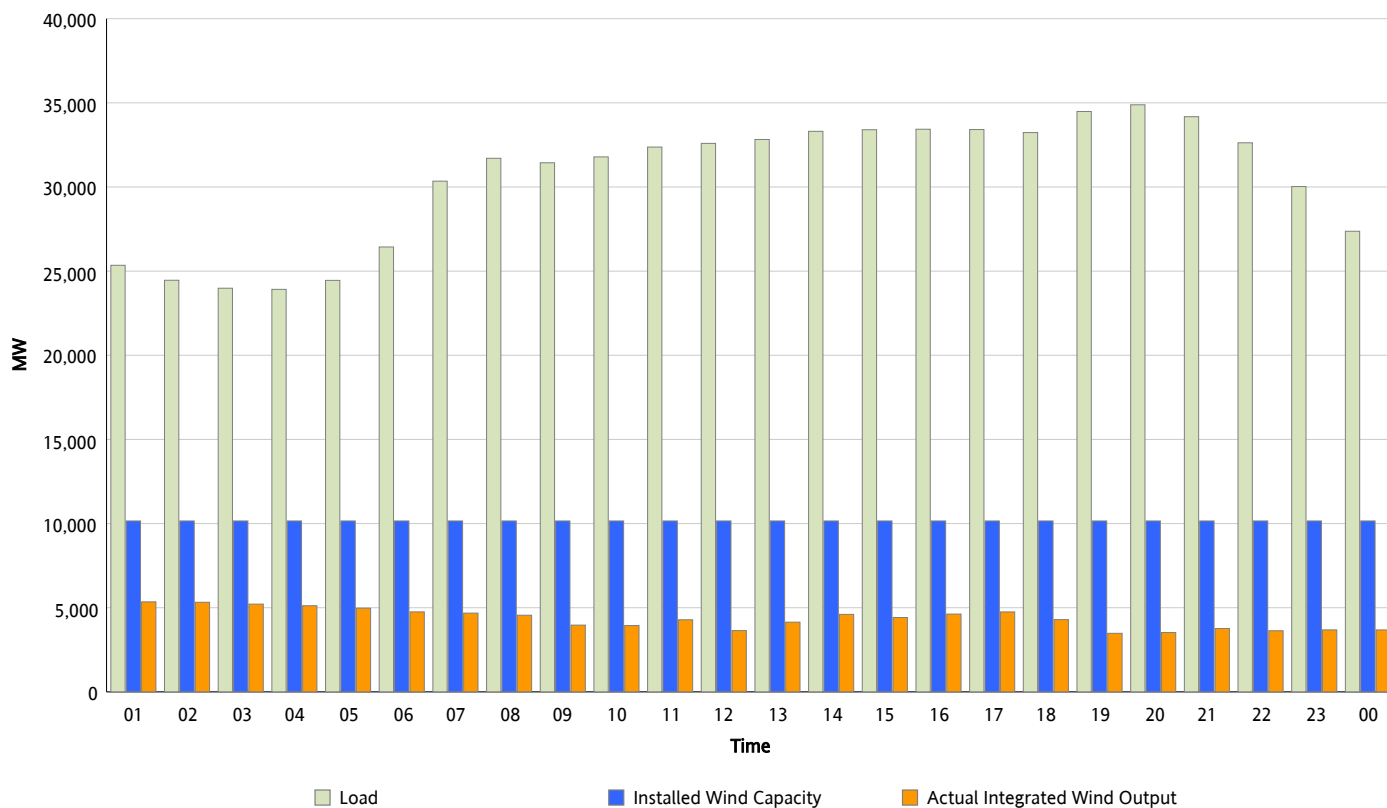
ERCOT Grid Operations

Wind Integration Report : 02/07/2013

Peak Load	34,882 MW
Load Peak Hour (HE)	20
Wind Over Peak	3,526 MW
Wind Record 01/29/13	8,667 MW
Max Wind Value*	5,449 MW
Wind Peak Time	00:49
Wind Integration %	21.75 %

Hourly Average Actual Load vs. Actual Wind Output

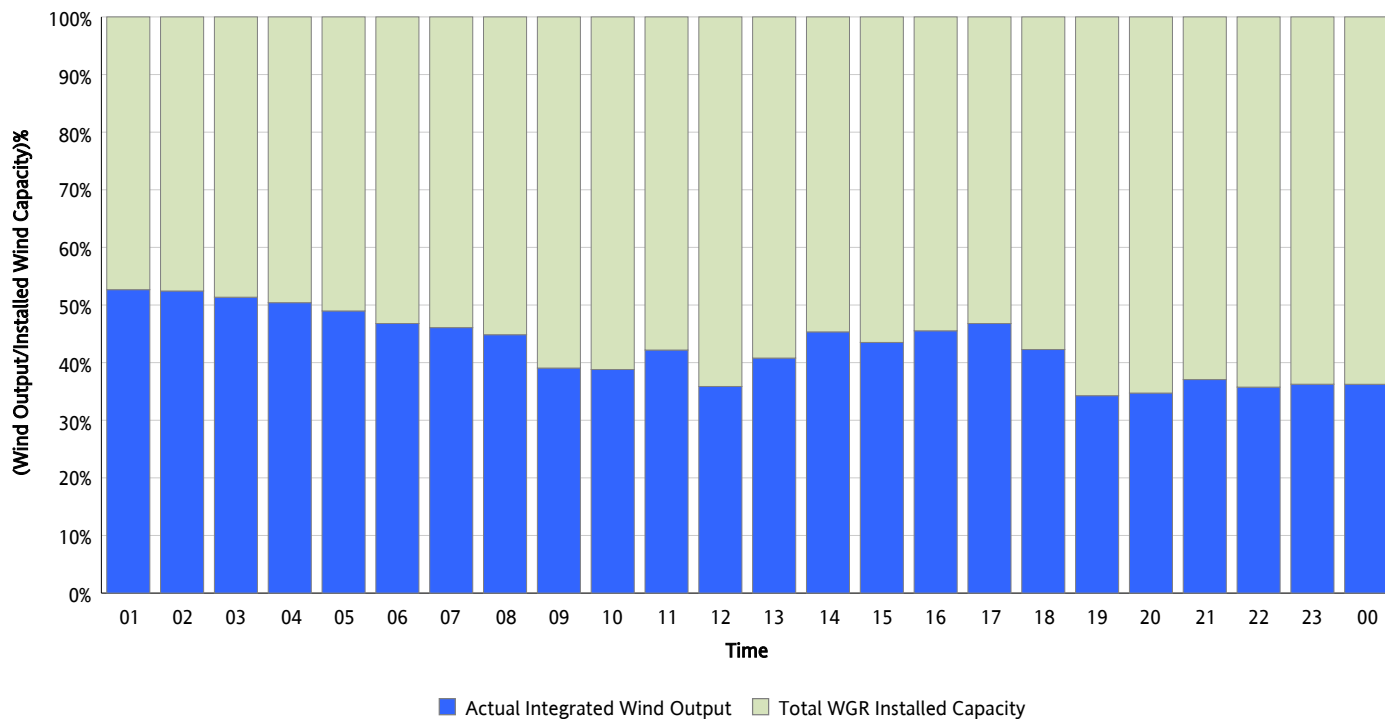
02/07/2013



* Wind Record and Wind Max represent instantaneous values and the rest of the values are integrated over the hour

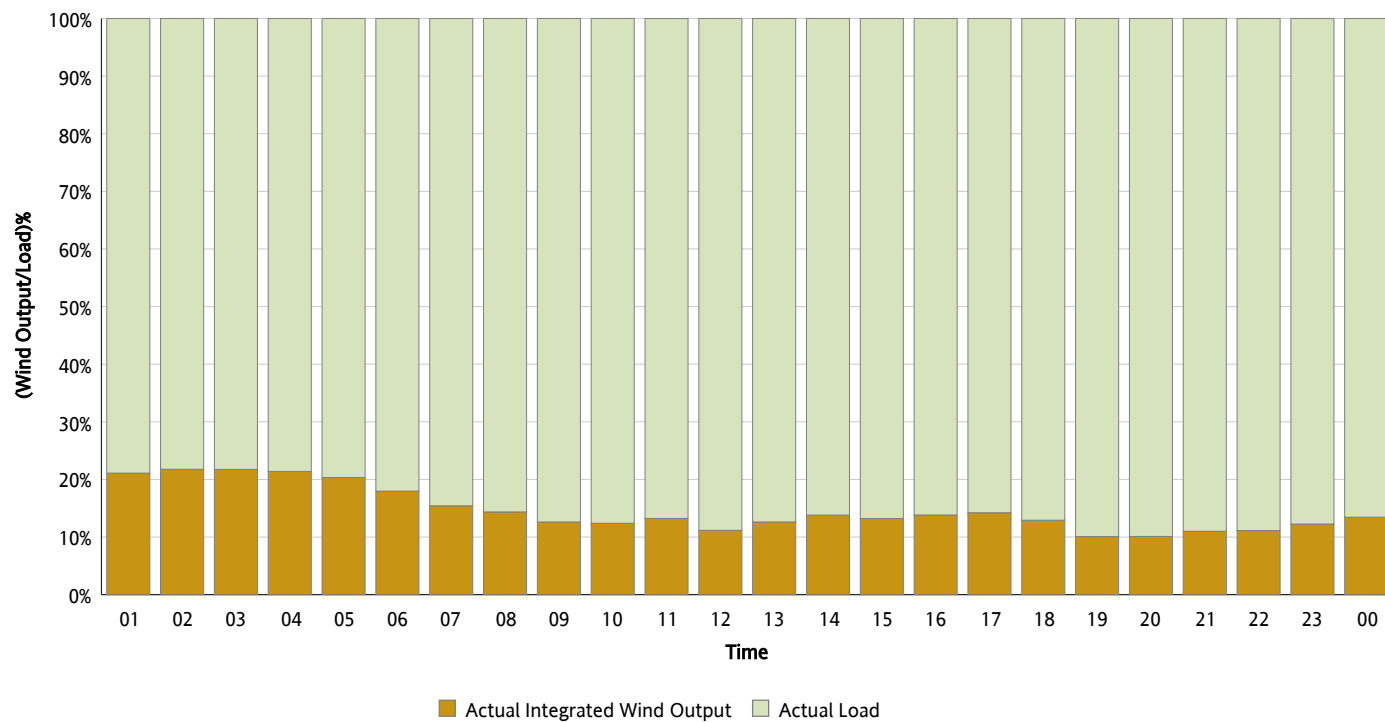
Actual Wind Output as a Percentage of the Total Installed Wind Capacity

02/07/2013



Actual Wind Output as a Percentage of the ERCOT Load

02/07/2013



ERCOT Load vs. Actual Wind Output

01/31/2013 - 02/07/2013

